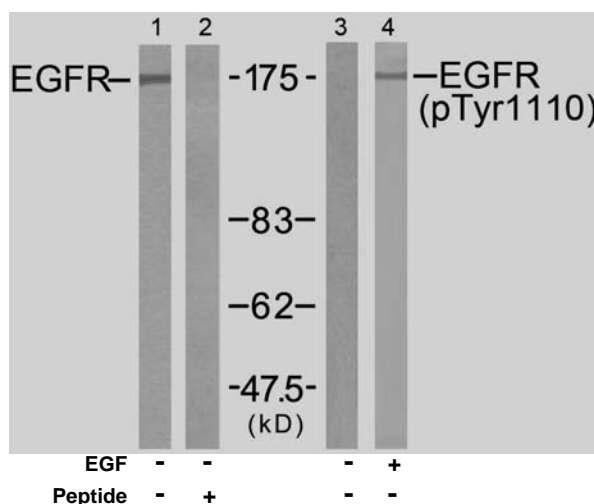


## Rabbit anti EGFR (pTyr1110)

- Catalog Number:** pAP11264  
**Amount:** 100µl (for 10 Western Blotting)  
**Swiss-Prot No. :** P00533  
**Form of Antibody:** Rabbit IgG in phosphate buffered saline (without Mg<sup>2+</sup> and Ca<sup>2+</sup>), pH 7.4, 150mM NaCl, 0.02% sodium azide and 50% glycerol.  
**Storage/Stability:** Store at -20°C/1 year  
**Immunogen:** The antiserum was produced against synthesized phosphopeptide derived from human EGFR around the phosphorylation site of tyrosine 1110 (P-V-Y<sup>P</sup>-H-N).  
**Purification:** The antibody was affinity-purified from rabbit antiserum by affinity-chromatography using epitope-specific phosphopeptide. The antibody against non-phosphopeptide was removed by chromatography using non-phosphopeptide corresponding to the phosphorylation site.  
**Specificity/Sensitivity:** EGFR (phospho-Tyr1110) antibody detects endogenous levels of EGFR only when phosphorylated at tyrosine 1110.  
**Reactivity:** Human, Mouse, Rat  
**Applications:** WB: 1:1000  
**References:** Kaisa Erjala, et.al. (2006) Clin. Cancer Res Jul 2006; 12: 4103 - 4111.  
 Judit Anido, et.al. (2003) Clin. Cancer Res ; 9: 1274.  
 Julian Andreev, et.al. (2001) J. Biol. Chem ; 276: 20130 - 20135.  
 Suil Kim, et.al. (2002) Am J Physiol Lung Cell Mol Physiol. ; 283: 67.



Western blot analysis of extracts from A431 cells untreated or treated with EGF (200ng/ml, 5min), using EGFR (Ab-1110) antibody (AP21256, Lane 1 and 2) and EGFR (phospho-Tyr1110) antibody (pAP11264, Lane 3 and 4).

**For Research Use Only**

Contact & Ordering Information: Angio-Proteomie, 11 Park Drive, Suite 12, Boston, MA 02215, USA. Fax: (480) 247-4337, [angioproteomie@gmail.com](mailto:angioproteomie@gmail.com)